



Maitreya Natura

Data sheet

Lotus absolute pink

Nelumbo nucifera - India
Organic product certified by ABCert

Name: Lotus absolute pink

Latin name: Nymphaea lotus

Part used: Flowers

Origin: India

Quality, certificate: Conventional

FEMA: -

US CAS no.: -

EU CAS no.: 91723-04-5

EINECS no.: 294-508-1

CoE no. (botanical source) -

INCI: NYMPHAEA LOTUS FLOWER EXTRACT

Synonyms: -

Production: Extraction of the flowers with hexan to produce the concrete. Extracted in Europe with ethanol to produce the absolute.

Odor and appearance Dark red viscous liquid; odor: honeyed, floral

Specific gravity 0.904 to 0.964 @ 20°C

Refractive index 1.474 to 1.490 @ 20°C

Optical rotation NA

Important constituents: Pentadecane, Heptadecene, Heptadecane

Melting point: NA

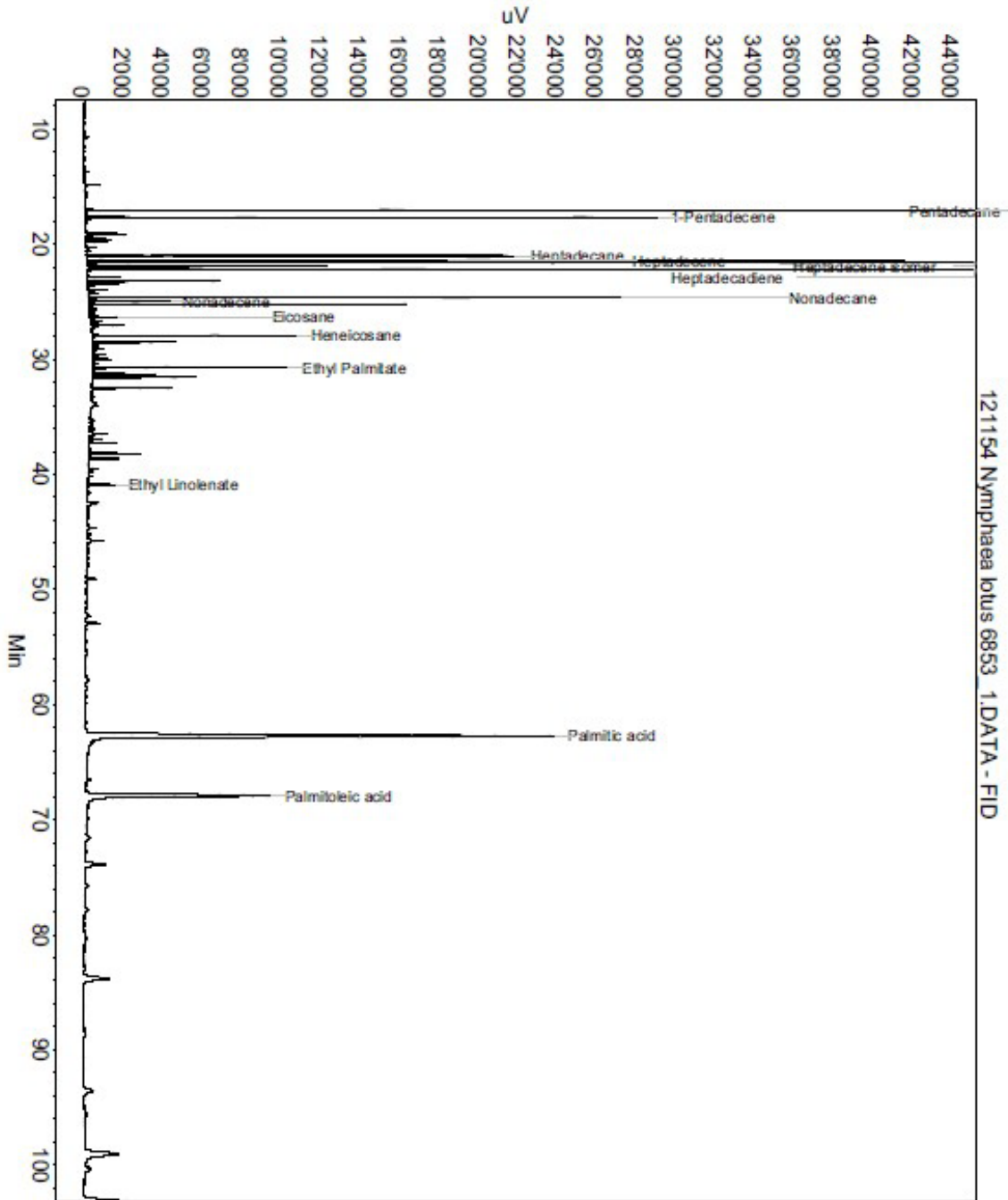
Flash point: > 62 °C

Maitreya Natura GmbH Srl

Vilpianerstraße 30 Via Vilpiano | 39010 Nals Nalles

Tel. +39 0471677733 | Fax +39 0471678128 | www.maitreya-natura.com | info@maitreya-natura.com

MwSt. Nr. / P.I. 02932590215



Index	Name	Time [Min]	Area [uV.Min]	Area % [%]	Allergene
1	Santene	6.43	6.9	0.028	
2		10.71	9.5	0.039	
3		13.74	7.3	0.030	
4		14.88	24.9	0.102	
5		15.54	7.2	0.029	
6	Pentadecane	17.04	1405.0	5.776	
7		17.50	11.2	0.046	
8	1-Pentadecene	17.66	824.3	3.389	
9		17.93	12.9	0.053	
10		19.06	50.8	0.209	
11		19.22	67.9	0.279	
12		19.49	36.8	0.151	
13		19.57	8.3	0.034	
14		19.67	35.9	0.148	
15		19.82	32.1	0.132	
16		20.29	16.3	0.067	
17		20.37	9.9	0.041	
18		20.54	12.5	0.052	
19	Heptadecane	21.01	644.2	2.649	
20		21.39	1254.6	5.158	
21	Heptadecene	21.41	331.2	1.362	
22	Heptadecene isomer	21.62	1581.6	6.502	
23		21.71	24.7	0.102	
24		21.92	410.0	1.686	
25		22.06	55.4	0.228	
26	Heptadecadiene	22.15	1627.3	6.690	
27		22.42	7.3	0.030	
28		22.85	47.3	0.194	
29		23.22	214.0	0.880	
30		23.44	45.6	0.187	
31		23.61	28.1	0.116	
32		23.97	36.8	0.151	
33		24.17	14.8	0.061	
34		24.30	20.8	0.086	
35	Nonadecane	24.63	781.5	3.213	
36		24.85	15.2	0.062	
37	Nonadecene	24.93	134.4	0.553	
38		25.01	9.5	0.039	

Index	Name	Time [Min]	Area [uV.Min]	Area % [%]	Allergene
39		25.09	7.6	0.031	
40		25.21	460.6	1.894	
41		25.47	14.9	0.061	
42		25.59	7.8	0.032	
43		25.64	11.7	0.048	
44		25.98	16.4	0.067	
45	Eicosane	26.32	41.8	0.172	
46		26.47	11.3	0.047	
47		26.66	23.3	0.096	
48		26.89	13.4	0.055	
49		27.06	62.5	0.257	
50		27.14	9.7	0.040	
51		27.23	16.7	0.069	
52		27.77	7.7	0.032	
53	Heneicosane	27.94	296.1	1.217	
54		28.10	7.2	0.029	
55		28.41	9.1	0.037	
56		28.53	133.2	0.548	
57		28.81	11.0	0.045	
58		28.87	11.1	0.046	
59		28.99	15.7	0.065	
60		29.09	29.6	0.122	
61		29.32	4.9	0.020	
62		29.63	24.4	0.100	
63		29.98	33.9	0.139	
64		30.34	8.8	0.036	
65	Ethyl Palmitate	30.70	373.4	1.535	
66		30.79	26.8	0.110	
67		31.29	161.1	0.662	
68		31.55	218.0	0.896	
69		31.63	111.2	0.457	
70		32.51	184.4	0.758	
71		32.63	8.2	0.034	
72		33.28	8.3	0.034	
73		35.20	9.4	0.039	
74		35.36	12.0	0.049	
75		35.84	10.8	0.044	
76		36.09	20.7	0.085	

